

# *GumaTech*

STOCKISTS & RECONDITIONERS OF SHIPS' SPARES





# Contents

<b>DIRECTOR'S DESK</b>
<b>ABOUT US</b>
<b>MAIN ENGINE</b>
<b>AIR COMPRESSOR</b>
<b>HYDRAULICS</b>
<b>SEPARATORS</b>
<b>FRESH WATER GENERATOR</b>
<b>HEAT EXCHANGER</b>
<b>AUXILIARY MACHINERY</b>
<b>TURBO CHARGER</b>
<b>DIESEL GENERATORS &amp; SPARES</b>
<b>OEM SPARES</b>
<b>MARINE AUTOMATION</b>
<b>WORKSHOP ACTIVITIES</b>
<b>OUR PRESENCE</b>



# Director's Desk



G.V. Seetharam

AT GUMA TECH, WE ALWAYS STRIVE FOR PERFECTION. AFTER MORE THAN TWO DECADES IN THE SUPPLY OF SHIP EQUIPMENT, WE CAN SAY CONFIDENTLY WE ARE STILL STRIVING TO ACHIEVE PERFECTION. WE HAVE REALISED THAT PERFECTION =  $X / 0 = \infty$  WE ARE INCREASING THE VALUE OF X IN OUR ENDEAVOURS BALANCING IT AGAINST COMMERCIAL VIABILITY.

I AM GUIDED BY THE BELOW **SHLOKA** ORIGINALLY IN SANSKRIT:  
EDUCATION / KNOWLEDGE GIVES HUMILITY  
HUMILITY GIVES INDUSTRIOUSNESS  
FROM INDUSTRIOUSNESS COMES WEALTH  
FROM WEALTH: CHARITY AND THEN HAPPINESS

WE, AT GUMA TECH, UNDERSTAND THE CONSTRAINTS UNDER WHICH THE TECHNICAL DEPARTMENT WORKS, ONLY TOO WELL AND WE TRY OUR BEST TO SUPPLY THE NEW/ RECONDITIONED / USED EQUIPMENT AT THE MOST ECONOMICAL RATES IN THE BEST POSSIBLE TIME FRAME.





ABOUT US



**Estd. 1994... 27 YRS. OF EXPERTISE IN RECONDITIONING  
FULLY EQUIPPED WORKSHOPS & WAREHOUSES SPANNING  
OVER 30,000 SQ. METERS**

**MORE  
THAN**

**500+**

**SATISFIED CUSTOMERS**

**RE-CONDITIONED & SUCCESSFULLY  
DELIVERED...**

...MAIN ENGINE, OEM PARTS, SEPARATORS, AIR COMPRESSORS, AUXILIARY MACHINERY,  
HEAT EXCHANGERS, FRESH WATER GENERATORS, HYDRAULICS, DIESEL GENERATORS,  
AUTOMATION EQUIPMENTS.

**GUMA TECH** HAS BEEN AT THE FOREFRONT OF EXCELLENCE, RELIABILITY BY ACHIEVING OPTIMAL  
LEVELS OF PERFORMANCE AND ACCOMPLISHMENT WITHIN THE SPECIFIED TIME FRAME. EQUIPPED WITH  
A ZEALOUS ATTITUDE TO TURN VISION INTO ACTUAL PLANS, WE AT GUMA TECH ASSURE THAT  
WHATEVER WE DO, CUSTOMER SATISFACTION IS OUR TOP MOST PRIORITY AND OUR WORK MANTRA  
COMBINED WITH SHEER PASSION AND KNOWLEDGE OF THE TECHNICAL SPECIFICITIES THEREBY  
PROMISING TO DELIVER TOP NOTCH QUALITY AND PRECISE EQUIPMENTS / SPARES AT YOUR PLACE.



# MAIN ENGINE



**AKASAKA** : A41

**B&W** : AKPH/DKRN, HU, VBF, VTBF, VT2BF, EF, GF, GFC, GFCA, GB

**DEUTZ** : SBV, RBV    **DOXFORD** : J, JC, JM, JS SERIES

**FIAT-GMT** : A 420, A 600, A 906, A 900 S    **HANSHIN** : LU SERIES

**MAK** : MU 452 AK, M 453 AK, M 551 AK, M 552 AK,

**MAN** : GV, V, KZ, KSZ SERIES    **mitsubishi** : UEC, UET SERIES

**MAN B&W** : LMC, LMC-E, SMC, SMC-C, KMC, KMC-C SERIES

**STORK** : TM 410, TM 620    **SULZER** : RD, RND, RND-M, RLA, RLB, RTA, RTA FLEX

**GOTAVERKEN, CKD-PRAHA, SMIT & BOLNES, PIELSTICK** ALSO AVAILABLE.





# AIR COMPRESSOR



**FULLY RECONDITIONED AIR COMPRESSORS - HATLAPA :** L9, 20, 28, 160, 350, W 80, 280 & 420

**MATSUBARA :** MH 108, 111, 114A & MS 92

**SPERRE :** HL1/85, HL2/120,105,140,160, LL2/120, HV2/200, 210, 240, 270A, 300A

**TANABE :** LSHC-20B, H64, 73 & 74

**YANMAR :** SC 10, 12.5, 15, 25, 30, 40, 50 N & TF

**J.P. SAUER :** WP22, 45, 65, 100, 120, 150, 200, 220, 226, 240, 310, 400  
WP 81L, 101, 121, 151, 271, 311

**SCREW AIR COMPRESSORS :** TAMROTOR, ATLAS COPCO, INGERSOLL RAND, HOWDEN

**REFRIGERATION COMPRESSOR :** BITZER, YORK, BOCK, SABROE, MYCOM, CARRIER, DAIKIN,  
MITSUBISHI

**AIR DRYERS ALSO AVAILABLE IN OUR STOCK**



# HYDRAULICS



BRUENINGHAUS, BAUER, BRATTVAG, DENISON, DANFOSS, DOWMAX, EATON, FUKUSHIMA,  
HAGGLUNDS, HYDROMATIK, HAWE, LIEBHERR, MITSUBISHI, HATLAPA, IHI, KAYABA,  
KAWASAKI, LINDE, NORWINCH, PARKER, REXROTH, SAUER, STAFFA, TTS, UCHIDA, VICKERS,  
VOLVO, ZOLLERN

HYDRAULIC MOTORS AND PUMPS ARE TESTED ON TEST BENCH TO CHECK THE VOLUMETRIC  
EFFICIENCY AND OVERALL EFFICIENCY.





# SEPARATORS



RECONDITIONING OF **ALFA LAVAL**, **MITSUBISHI** AND **WESTFALIA** SEPARATORS.

COMPLETELY DISMANTLED, ALL PARTS SHOT BLASTED, CHECKED & RECONDITIONED TO MANUFACTURERS' SPECIFICATIONS.

BOWL CHECKED FOR BALANCING & MILLED IF REQUIRED.

ALL PARTS ASSEMBLED WITH NEW SPARES, WHEREVER REQUIRED & FULLY PAINTED.

RUN ON TEST BENCH FOR 12HRS TO 24 HRS.



# SEPARATORS



**ALFA LAVAL** : MAB, MAPX, MOPX, LOPX, MFPX, WHPX, MMPX, FOPX, MMB, MIB, SA, SU & PUREBILGE SYSTEM

**MITSUBISHI** : SJ SERIES

**WESTFALIA GEA** : OSA, OSB, OSC, OSD, OSE, OTA, OTB, WSC





# FRESH WATER GENERATOR



COMPLETELY RECONDITIONED FRESH WATER GENERATORS.

**ALFA LAVAL :** DPU, JWP, JWSP & AQUA HW SERIES

**ALFA LAVAL NIREX :** PLATES CLEANED, GASKETS RENEWED, PRESSURE TESTED, VACUUM CREATED, FRESH WATER PRODUCED, ALL ALARMS TESTED.

**APV BAKERS AS :** WDU SERIES

**ATLAS SASAKURA :** K, KE & KM SERIES

**SASAKURA :** TUBES CLEANED, RENEWED IF NECESSARY, COATING RENEWED, PRESSURE TESTED, VACUUM CREATED, FRESH WATER PRODUCED, ALL ALARMS TESTED.

**SONDEX :** SFD SERIES



# HEAT EXCHANGER



**ALFA LAVAL** : A, AK, AM, AX, M-SERIES

**APV** : A, H, K-SERIES **GEA** : VT SERIES

**LEADER LHE** : HT, SH-SERIES

**SONDEX** : S, SDF-SERIES **SWEP** : GX, GXD-SERIES





# AUXILIARY MACHINERY



**AIR HORNS :** IBUKI KOGYO, ZOLLNER, KOCKUM SONICS

**AIR MOTORS :** DEPRAG, PLUTO DENMARK, JAPAN AIR MOTOR, KITAGAWA, TOKU PNEUMATIC, SHIN MYUNG, SAMGONG, OCEANTECH

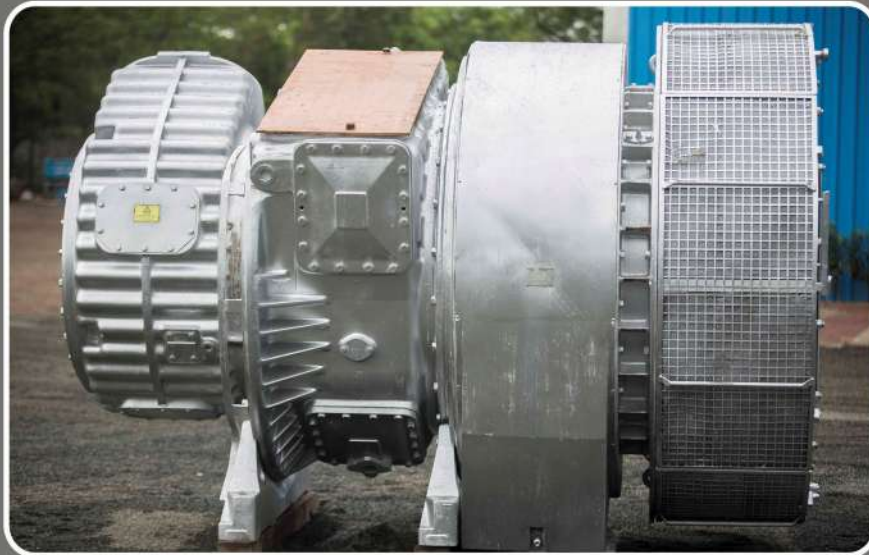
**BILGE WATER SEPARATORS :** ALFA LAVAL, GEA WESTFALIA, RWO, SASAKURA, HAMWORTHY, TAIKO, JOWA 3 SEP

**GOVERNORS :** WOODWARD, EUROPA, DIESEL KIKI, CATERPILLAR, YANMAR, ZEXEL

**PUMPS :** HAMWORTHY, IRON, KVAERNER, EUREKA, TAIKO, SHINKO, ALLWEILER, NANIWA, DESMI, TAIKO, GRUNDFOS, AZCUE, SHIN SHIN, EBARA, GOULDS



# TURBO CHARGER



**MAN :** TCA, TCR, NA, NR SERIES

**MAN B&W :** NR 15/R151, NR 20,22,24-R, NR 29/S044, NA 48, 57-TO

**MITSUBISHI :** MET 33S, MET 42SB,SC, MET 53SB,SC,SD, 71SD, 83SD

**VEB /EKM :** PDH 30, PDH 50, H 71, HS

**HSM :** TH 10 IIS, TH 20 IIS

**NAPIER :** HP 200-204, NHP 180C-K

**BBC/IHI BBC/ABB :** TPL, TPS, VTR..0, 1 & 4 TYPE

VTR160-1, 200-1, 250-1, 320N, 321-2P, 321-2, 400-1, 500-1, 630-631, VTR214-11,  
254-11, 304-11-32, 354-11-32, 454-11-31-32, 564-11-31-32-A32, 714-11-31-32-A32,

TPL-77-12, TPL 85-B12 & B15

**IHI :** RU 110, RU 163, RU RH 1022



# DIESEL GENERATORS & SPARES



## DIESEL GENERATORS :

B&W, BERGEN, CATERPILLAR, DAIHATSU, DEUTZ,  
HIMSEN, MAK, MAN B&W, MITSUBISHI, RUSTON,  
SKL, SULZER, STORK, WARTSILA, YANMAR



# OEM SPARES



WE AT GUMA TECH SUPPLY THE OEMS FOR ALL RENOWNED AND MAJOR BRANDS.

WE ALSO SUPPLY TOP QUALITY AFTERMARKET SPARES/PARTS FROM **EUROPE, KOREA & JAPAN.**

CATEGORIES ARE AS LISTED BELOW FOR BOTH MARINE & INDUSTRIAL USE:

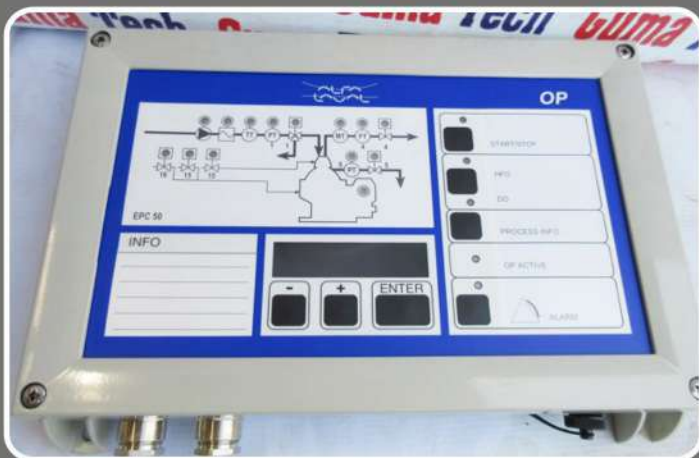
- **AIR COMPRESSOR & PUMP** : COMPLETE FULL SET (WITH MOTOR) OR INDIVIDUAL PARTS AS PER THE CLIENT'S REQUIREMENT.
  - **AUXILIARY ENGINE** : SUPPLY OF ORIGINAL & OEM SPARES
  - **DIESEL ENGINE** : ORIGINAL & OEM SPARES ARE AVAILABLE
- **PURIFIER** : COMPLETE FULL SET OR INDIVIDUAL PARTS AS PER THE CLIENT'S REQUIREMENT.
  - **PLATE COOLERS & DISTILLERS SPARES**
  - **REFRIGERATION COMPRESSORS & SPARES.**
- LARGE STOCK OF SECOND HAND **GOVERNORS** & NEW PARTS.





# MARINE AUTOMATION

“OUR SERVICE ENGINEERS CARRY OUT SERVICE / REPAIR OF



## KONIGSBERG AUTOMATION K-Chief & Auto Chief System

- AutoChief C-20

## NOR CONTROL SYSTEMS

- AutoChief 4,7 DC-1000 & 2000

## SOREN T LYGSO SYSTEM

## NORIS

- NORIMOS -1000

## ABB

- M/E CONTROL CARD, SYNPOL & ABB DECON

## SIEMENS

- SIMATIC & M/E CONTROL CARD SYSTEM

## TERASAKI

- WATCH FREE SYSTEM, WE-3 & 300

## NABCO SYSTEMS

- ACTUATOR EAL 300 L/R  
EAR 500 L/R
- MG-800 GOVERNOR SYSTEM, ACTUATOR DRIVE, CONTROL, REMOTE & SAFETY SYSTEM

## ROSE MOUNT

- SAAB TANK RADAR SYSTEM -SUM 21

## AUTRONICA

- TANK LEVEL SYSTEM GL 90, GL 100

## MOSS GAS DETECTION SYSTEM

## HONEY WELL & NAKAKITA SYSTEM

## OIL MIST DETECTOR

- GRAVINER : MARK-4,5,6 & 7
- DAIHATSU : MD 9, M, MD-SX
- SCHALLER VISATRON  
VN115/87 & VN 215/87 PLUS RANGE  
VN 215/93, VN 115/93 RANGE  
VN 215/87, EMC RANGE
- QMI OIL MIST DETECTOR



# MARINE AUTOMATION



## AUTOMATION EQUIPMENT ON BOARD THE VESSELS”



### O.D.M.E.

- SERES : S663 MK II, MK III
- VIKING MARPOIL
- JOWA CLEANT 9000
- VAF MK-V & MK VI

### 15 PPM BILGE ALARM MONITOR PANELS

- DECKMA- OCD, OCD-1M, 2M, OMD-11, 21,24, 2005, 2008
- RTE: OCD-CM, SMART BILGE/ CELL
- BRANNSTORM : BILG MON 488
- JOWA : M-93, JOWA 3SEP SEA GUARD
- SERES : BWAM S646
- FELLOW KOGYO: ET30A, 35A, FOCAS 1500 C & 1800 C

### OXYGEN ANALYZERS

- SERVOMEX : OA135, 01175, 1800
- GREEN INSTRUMENTS : G36 GOVERNORS
- ELECTRONIC WOODWARD GOVERNOR CONTROLS
- 2301A SPEED CONTROL & LOAD SHARING PANELS
- MECHANICAL GOVERNORS : UG/ PG-PL / PGA/3161
- ACTUATORS AND AMPLIFIERS PGA-EG, EGB , UGA

### PURIFIERS AUTOMATION OF ALL MAJOR MAKERS

- ALFA LAVAL : EPC-41 &400, EPC-50, 60 &1000,
- GEA-WESTFALIA : VESC-1, PLC 100/3, D-10,
- MITSUBISHI, CONTROL UNIT WITH PLC FOR SJ-T, E,F,FH,G, GH - SERIES

### BOILER & BURNER

- BOILER & BURNER CONTROLS IN AALBORG & SAACKE MAKERS
- FIRE ALARM CONTROL PANELS
- AUTRONICA, BV-20, BS-100 DYFI, BU 101 DYFI





# WORKSHOP ACTIVITIES



WE HAVE FULLY EQUIPPED WORKSHOPS IN BHAVNAGAR AND MUMBAI TO CARRY OUT RECONDITIONING OF ALL AUXILIARY EQUIPMENT.



# OUR PRESENCE



## INDIA



**BHAVNAGAR**



**MUMBAI**

## UAE



**AJMAN FZE**

## BANGLADESH



**CHATTOGRAM (CHITTAGONG)  
(IN COLLABORATION WITH  
WESTERN MARINE SERVICES)**

## OUR GLOBAL REACH





CONTACT US



+91 9825205275 • +971 55 6247838

info@gumatech.com www.gumatech.com

@gumatech

Guma Tech

guma-tech

GumaTech

guma\_tech



INDIA



BANGLADESH



SWEDEN



UAE

WE TAKE THE GUESSING

OUT

IN SECONDHAND SPARES

